

---

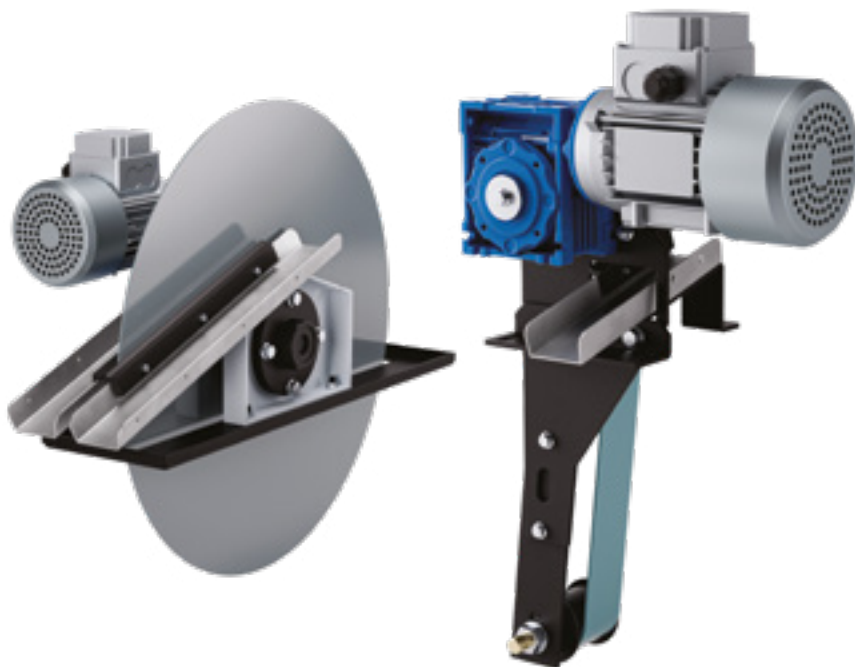
# Skim

---

Liquid Purification

---

Eliminator of superficial oils



---

# Skim

Skim is an eliminator of superficial oil, suitable to be used on every kind of basin or tank, thanks to its shape and materials used. Skim is available in disc (Skim-D) or belt (Skim-N) versions.

The latter version is more suitable where there is little space and in cases of high liquid level fluctuations.

Skim removes the veil of light products that are not miscible with water from the surface of coolants, creating a barrier that prevents air from coming into contact with the emulsion and encourages the formation of anaerobic-type bacterial flora.

The use of Skim therefore enables the elimination of bad odours and maintains the quality of coolant for a long time.

Losma guarantees that each purifier is individually tested through rigorous control procedures.

A quality and functional test certificate is issued for each unit.

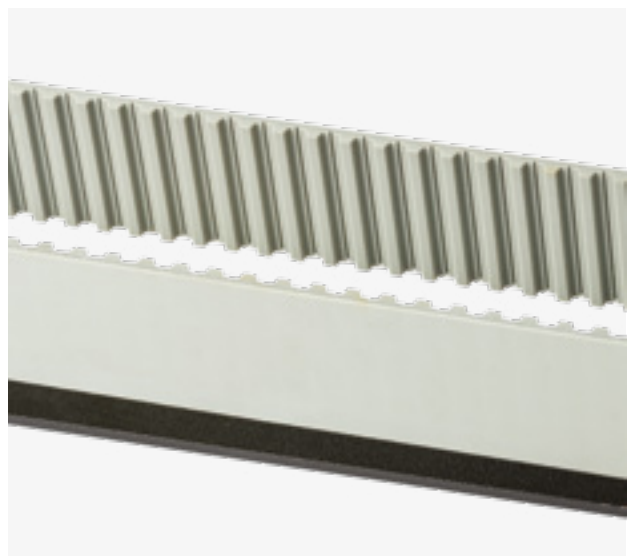


---

# Operation

The disc or belt, immersed in the liquid, rotates and by adhesion drags the pollutants adhering to it outwards. As it rotates, the disc or belt encounters two scrapers with a rubber edge that remove everything that adheres to it and, with appropriate channels, convey it outward.

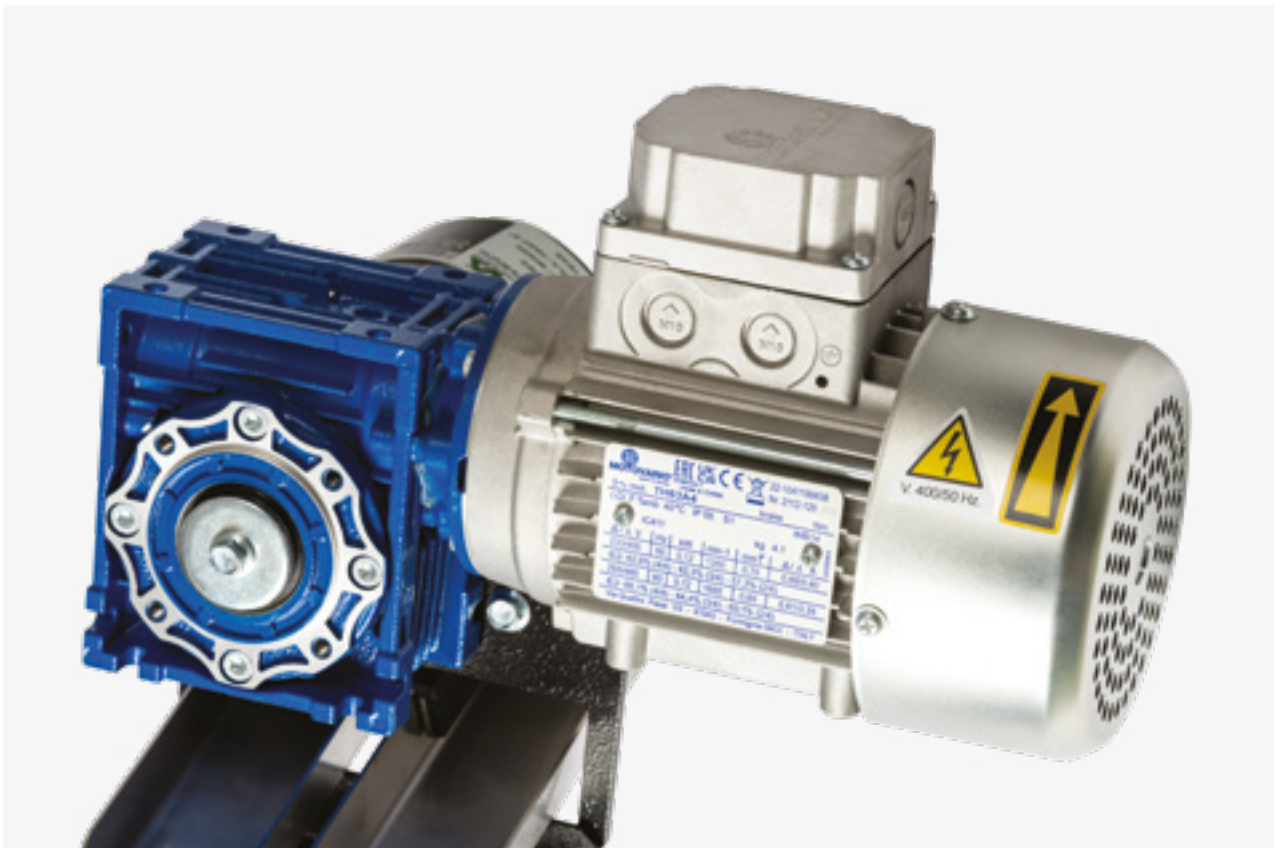
It is possible to equip Skim with an electrical command and control panel that can set timed operating cycles.



# Advantages

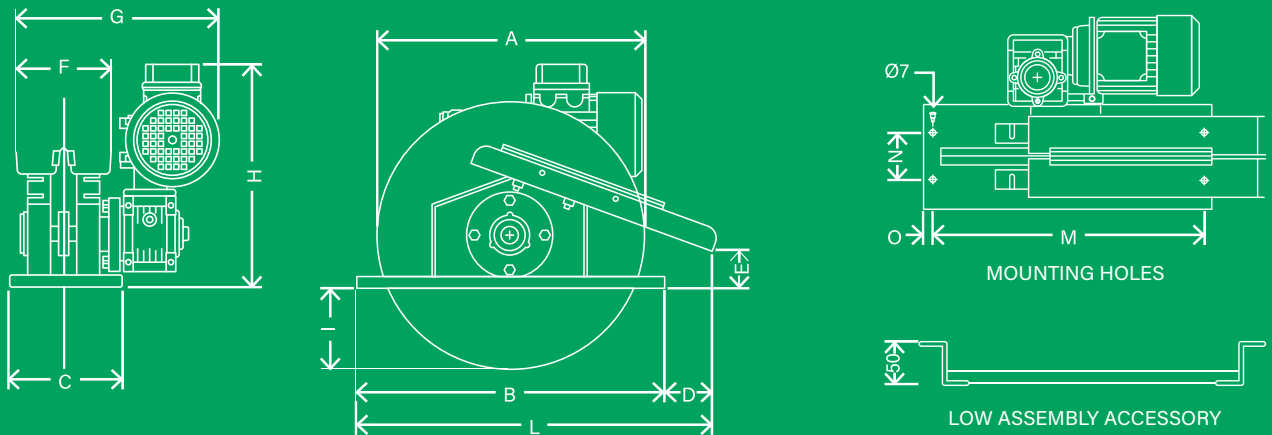
## VERSATILITY AND EASY MAINTENANCE

Thanks to its wide range of accessories, Skim can be positioned on the edge of the tank, on the cover, recessed or on an internal structure. The extreme simplicity of construction limits maintenance to just a few operations. Checking the wear of the scrapers and periodic cleaning of the drainage channels keeps the system in perfect working order.

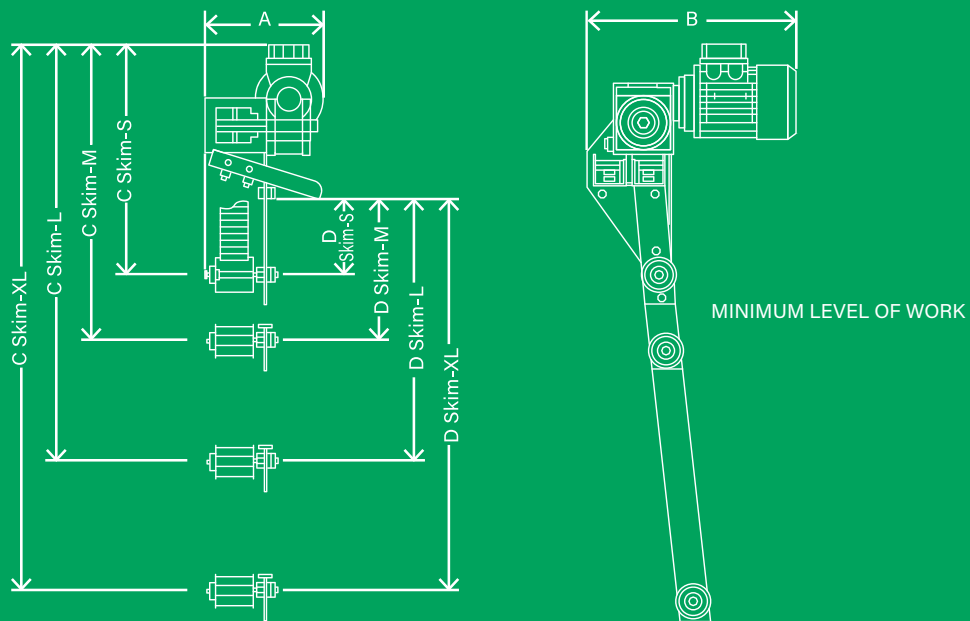


# Technical Data

## SKIM-D



## SKIM-N



# 1. Skim-D

Models	Dimensions (mm)													Maximum oil extraction per hour (l/h)	Weight (Kg)	Power (kW) 50 Hz / 60 Hz
	A	B	C	D	E	F	G	H	I	L	M	N	O			
Skim-D 1	350	400	150	60	50	120	280	300	80	462	374	66	13	13	15	0,12
Skim-D 2	500	550	150	52	28	120	280	300	180	612	524	66	22	22	18	0,12
Skim-D 3	600	650	150	78	0	120	280	300	230	740	624	66	35	35	20	0,12

# 2. Skim-N

Models	Dimensions (mm)			Immersion depth D (mm)	Weight (Kg)	Power (kW) 50 Hz / 60 Hz
	A	B	C			
Skim-N S	205	356	441	126	15	0,12
Skim-N M	205	356	554	238	18	0,12
Skim-N L	205	356	982	666	20	0,12
Skim-N XL	205	356	1220	930	22	0,12