
GALILEO EXTRA

Air Filtration

Oil mist extractor



Galileo Extra

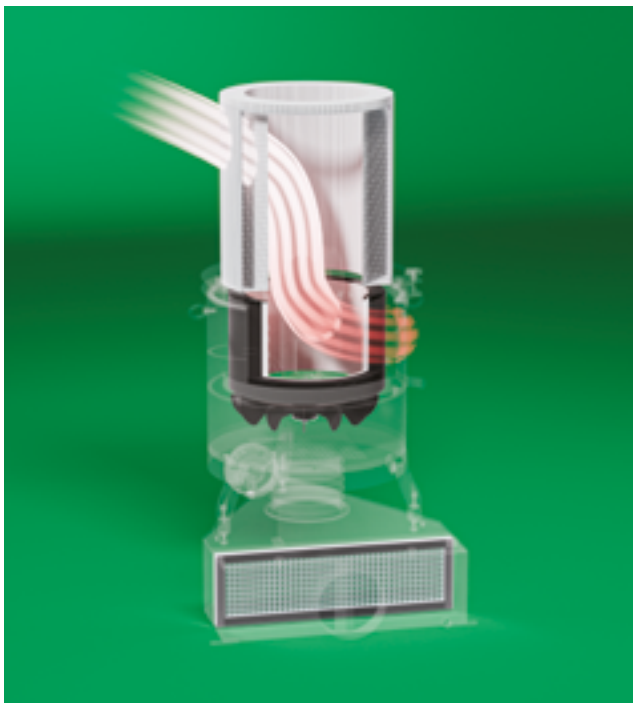
Galileo Extra is a patented extractor for mists created by neat oil and emulsions used in machine tools, even when there are large quantities of particulate. It is available in five models with flow rates from 245 to 2750 m³/h.

Galileo Extra guarantees high filtration efficiency, longer filter life and low power consumption. It is easy to install and features a highly innovative design. Galileo Extra is the ideal solution to be mounted on the machine.

Losma guarantees that each extractor is tested through strict control procedures.

A quality and functional test certificate is issued for each unit.

Patented
Product



Operation Video

Discover how it works in detail. Watch the descriptive video about Galileo Extra.

Scan the QR Code.



Plus

FILTERS DESIGNED FOR HIGHER EFFICIENCY

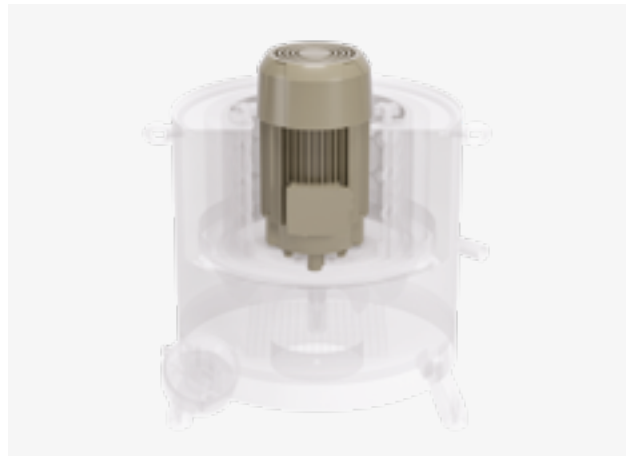
The internal filters have been redesigned to increase their filtration efficiency, for even the smallest particles. The internal materials have been tested by the Losma laboratories and have passed stress tests for contact compatibility with numerous types of oil and emulsion on the market.

LOW POWER CONSUMPTION

Inspired by sustainability, Galileo Extra uses high-efficiency motors with very low powers.

NEW TURBINES OFFER MORE STATIC PRESSURE

Even higher static pressures maintain optimum extraction flow rates, even when Galileo Extra is installed far from the filter source. The special turbine is designed to eliminate dust deposits from its surface, solving the problem of vibrations even with large quantities of particulate.



Optional

1. G-Guard Pre-Filter

This is a metal pre-filter to maximise filtration efficiency and filter duration when there is a lot of oil mist, even at high pressures, mixed with dusts and metal chips.

G-Guard plus has an inspection door to make maintenance easier, and is fully washable.



2. G-Clipper Post-Filter

This is a post-filter cartridge for micro-mists, vapours and fumes. It can achieve very high filtration levels, up to 99.95% according to EN 1822.



3. X-VIEW

Filter clogging sensor

The new X-VIEW sensor can measure progressive clogging in Galileo Extra filters and indicates three main operational states:

- GREEN: Clean Filters;
- YELLOW: Pre-clogging;
- RED: Clogged.

X-View indicates the following:

- possible obstructions in the suction duct between the filter and machine tool;
- zero flow rate alarm. For example, when the motor is faulty or not operating, or when the duct is not connected.

Technical Data

Voltage: 24 VDC

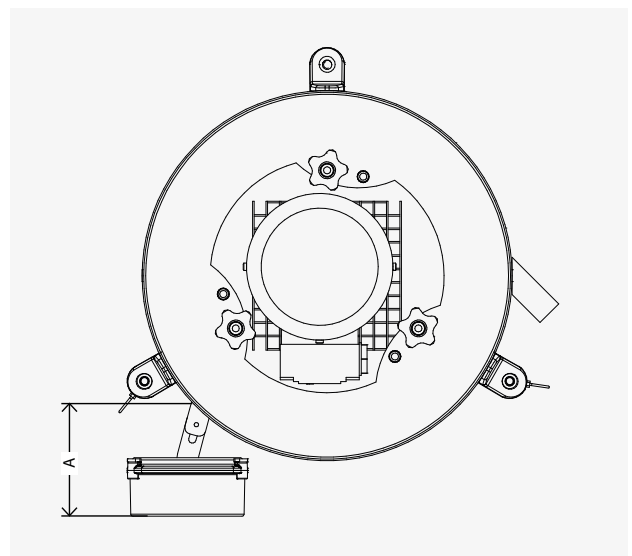
Indicator: Light

Overall Dimensions:

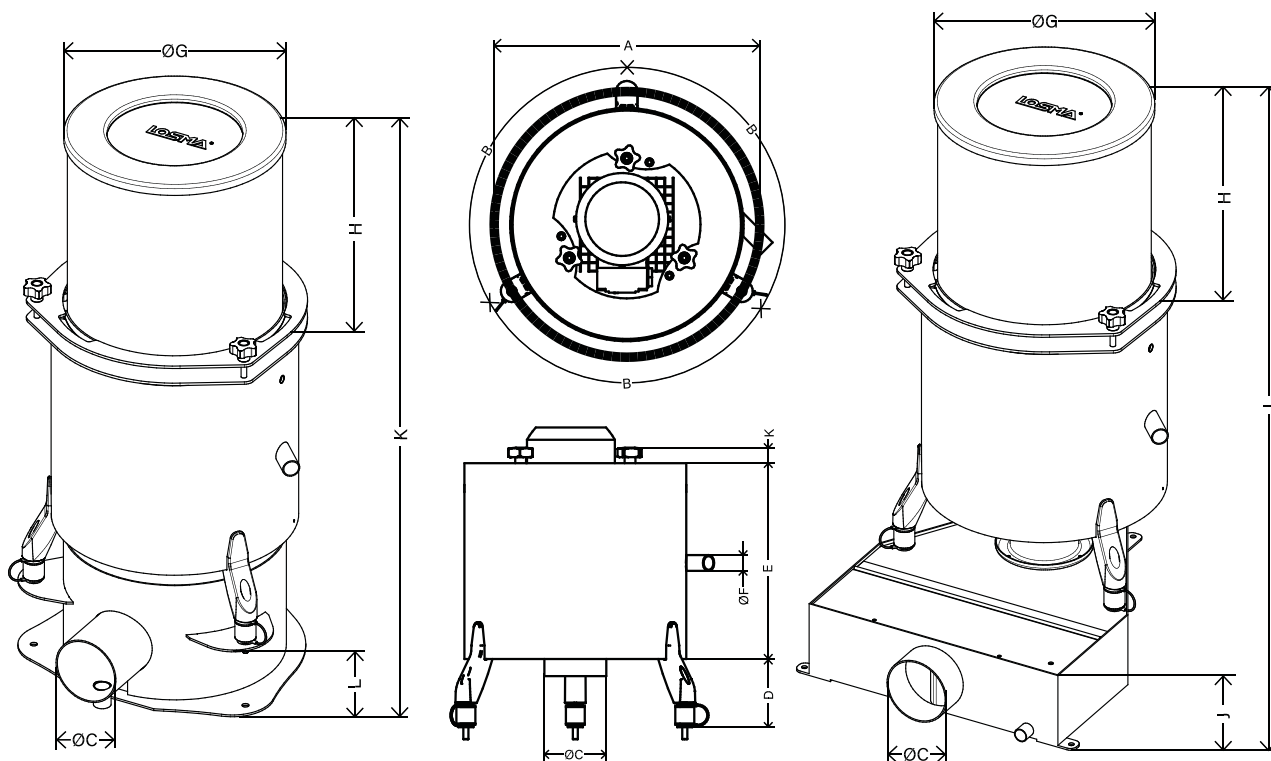
Ø=115mm

A=110mm

** power supply not included*



Technical Data



1. Galileo Extra

Models	Dimensions (mm)												Net Weight (kg)
	ØA	<) B	ØC	D	E	ØF	ØG	H	I	J	K	L	
GX250	330	120	78	100	280	25	254	310	700	163	789	99	11
GX500	400	120	98	100	310	25	315	310	730	198	838	118	15
GX1000	490	120	148	90	400	25	380	425	930	264	1083	168	36
GX2000	530	120	148	90	450	25	380	425	950	264	1133	168	41
GX3000	560	90	198	90	550	25	460	315	1025	339	1178	223	62

Models	Maximum air flow rate (m ³ /h) *		Pressure (Pa)		Power (kW)		Suction inlet (mm)	Maximum Noise (dBA)	
	50 Hz	60 Hz	50 Hz	60 Hz	50 Hz	60 Hz		50 Hz	60 Hz
GX250	245	280	630	900	0,09	0,12	80	61,4	64,2
GX500	530	630	830	1100	0,25	0,29	100	67,6	72,2
GX1000	980	1170	1075	1360	0,55	0,66	150	72,8	73,5
GX2000	1450	1760	1270	1850	1,10	1,30	150	74,8	75,6
GX3000	2300	2750	1500	2150	2,20	2,55	200	76,2	79,3

* free inlet, STD filters, no H13